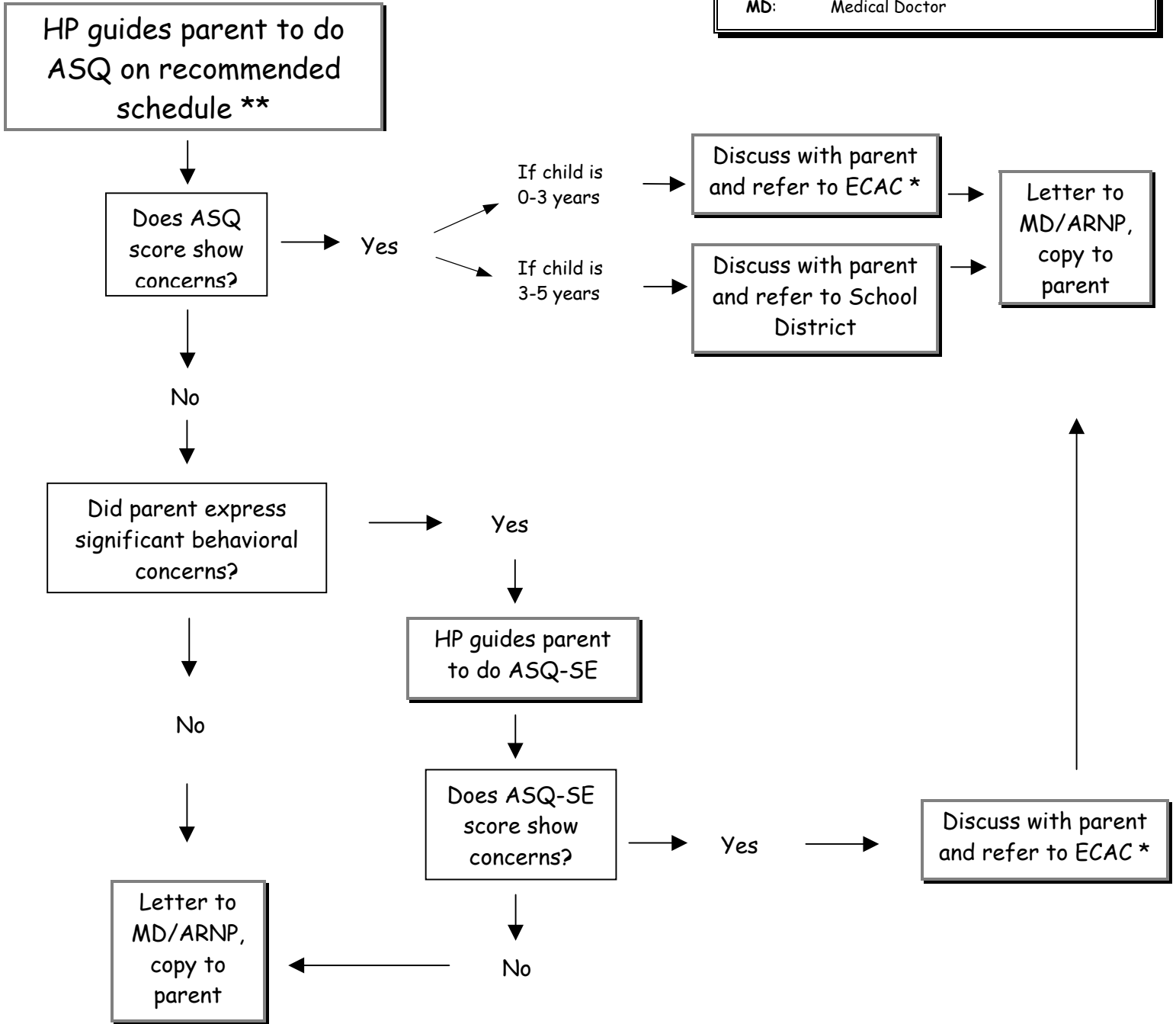


# Ages & Stages Questionnaire (ASQ) Procedural Flow

KEY	
ARNP:	Advanced Registered Nurse Practitioner
ASQ:	Ages and Stages Questionnaire
ASQ-SE:	ASQ - Social-Emotional
ECAC:	Early Childhood Assessment Clinic at Whatcom County Health Department
HP:	Health Promoter
MD:	Medical Doctor



\*\* Early Head Start is mandated to use ASQ-SE, in addition to the ASQ, with all 0-3 yr. old children.

\* 0 - 3 yr. old children living in Nooksack Valley School District should be referred to the School District, as the district evaluates and provides services for children this age.

