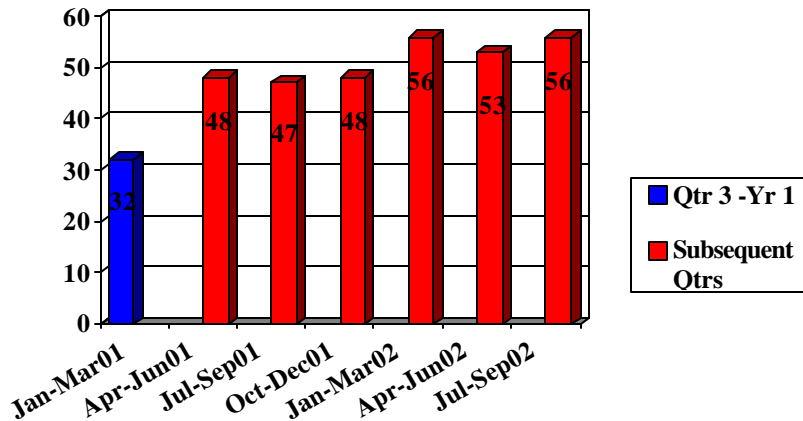


6 Month & 3 year Olds Screened Baseline & Subsequent Quarters



Ages and Stages Questionnaire Statistics October 7, 2002-March 31, 2003

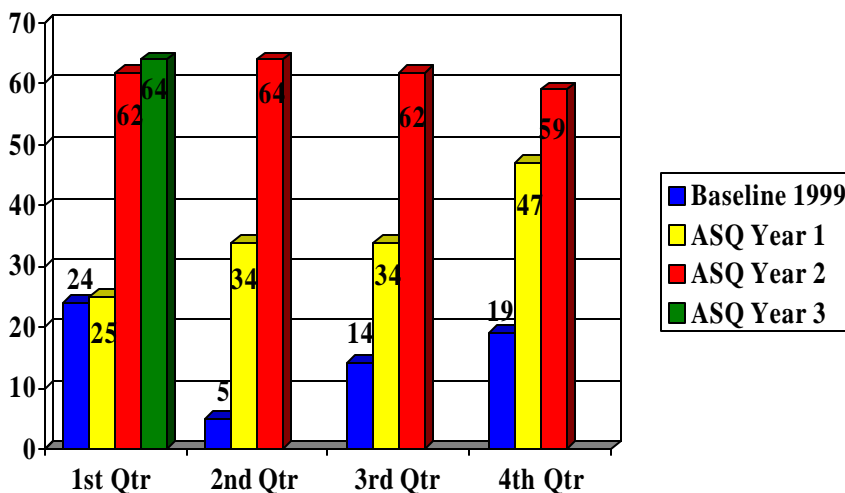
	GCC	CPP-G	GPA	GCHD-CH	GFD	TOTAL
Total ASQ's completed by Practice	749	155	34	417	65	1420
Referrals by Practice	17	1	4	6	8	36
Completed ASQ's by Age Interval						
4 months				7	5	4
6 months	164	53	18	128	11	6
8 months				33	2	8
10 months				10	11	10
12 months/1 yr.	167	33	6	90	18	12
14 months	1	29		7	1	14
16 months		26	1	6	3	16
18 months	122		1	26	3	18
20 months				5		20
22 months				5		22
24 months/2 yrs.	127	13	5	15	4	24
27 months				3		27
30 months				11		30
33 months				3		33
36 months/3 yrs.	104	1	3	15	2	36
42 months				6		42
48 months/4 yrs.	64			22	5	48
54 months				15		54
60 months/5 yrs.				10		60
Total ASQ's	749	155	34	417	65	
☐☐ Denotes Ages Targeted						
ASQ Start Date	10/7/2002	10/17/2002	11/5/2002	12/17/2002	2/5/2003	

**Ages and Stages Questionnaire Statistics
October 7, 2002-March 31, 2003**

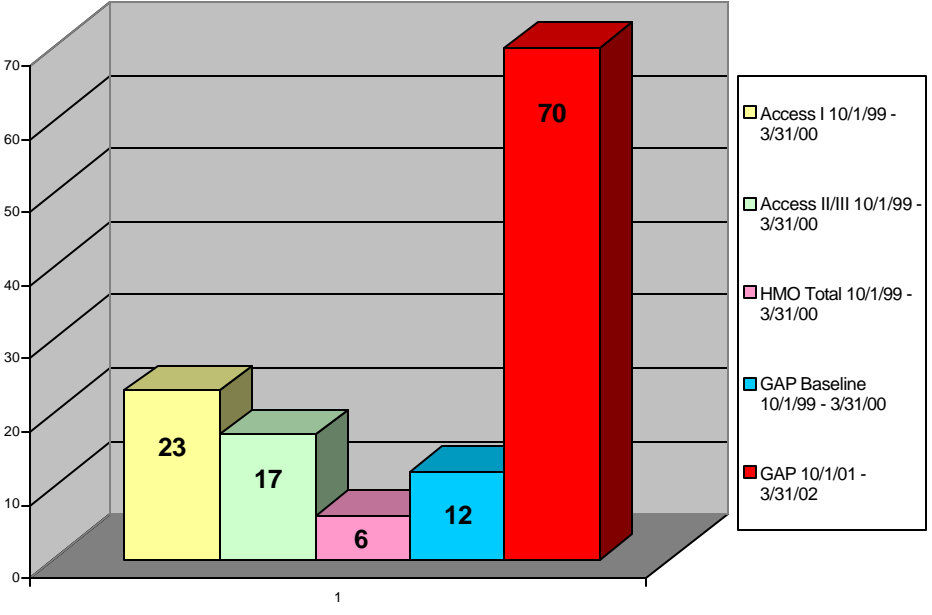
	GCC	CPP-G	GPA	GCHD-CH	GFD	TOTAL
Total ASQ's completed by Practice	749	155	34	417	65	1420
Referrals by Practice	17	1	4	6	8	36
Completed ASQ's by Age Interval						
4 months				7	5	4
6 months	164	53	18	128	11	6
8 months				33	2	8
10 months				10	11	10
12 months/1 yr.	167	33	6	90	18	12
14 months	1	29		7	1	14
16 months		26	1	6	3	16
18 months	122		1	26	3	18
20 months				5		20
22 months				5		22
24 months/2 yrs.	127	13	5	15	4	24
27 months				3		27
30 months				11		30
33 months				3		33
36 months/3 yrs.	104	1	3	15	2	36
42 months				6		42
48 months/4 yrs.	64			22	5	48
54 months				15		54
60 months/5 yrs.				10		60
Total ASQ's	749	155	34	417	65	
■ ■ Denotes Ages Targeted						
ASQ Start Date	10/7/2002	10/17/2002	11/5/2002	12/17/2002	2/5/2003	

**Comparison of Total 1, 2 & 4 Year Olds Screened
Baseline (Denver & Speech Evaluations)**

Program Years One & Two (years 2 & 3 include two additional practices)



Percentage of 0-24 Month Old Health Check Recipients Who Received a Written Developmental Assessment During a 6 Month Period



1